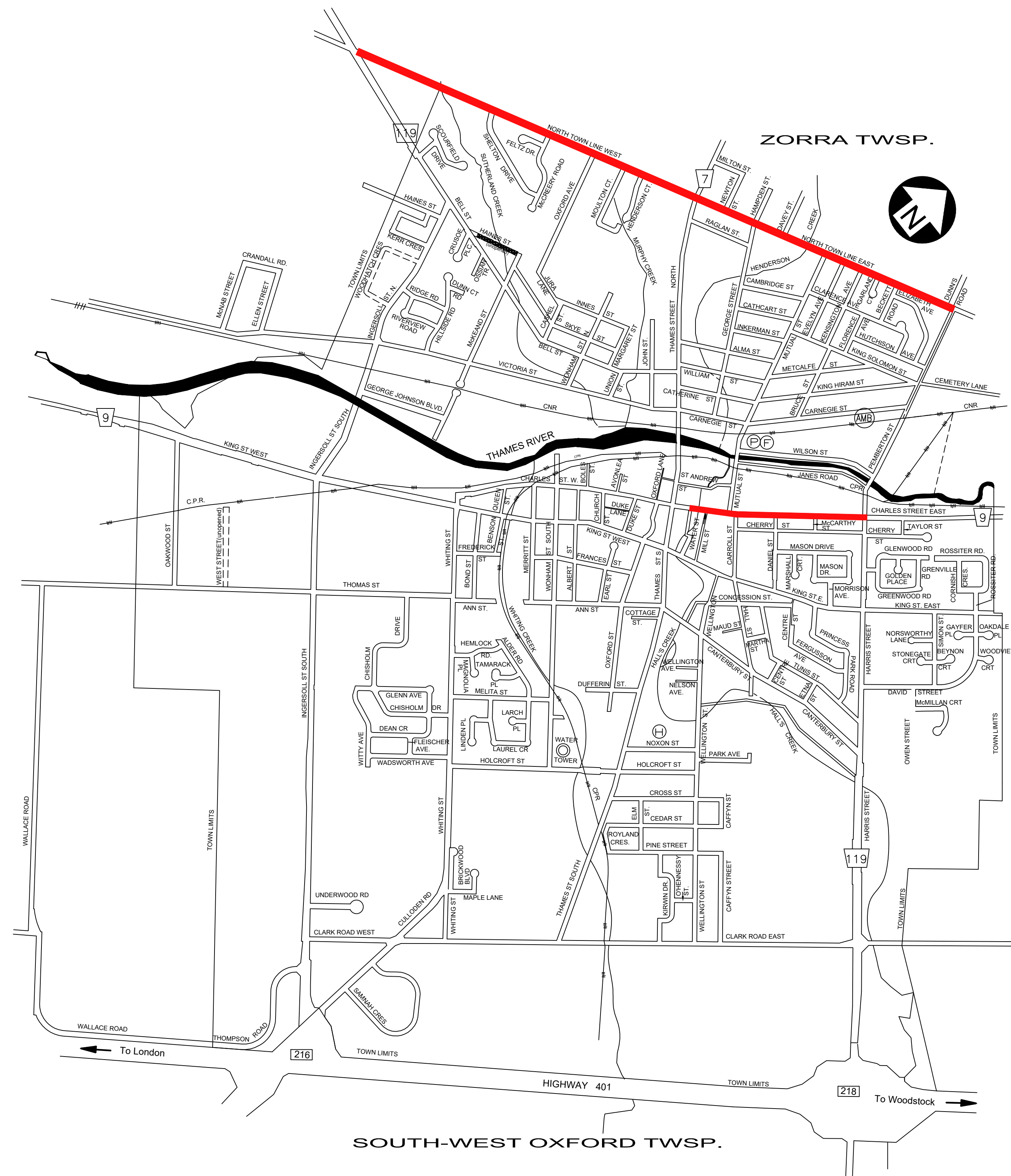


# THE CORPORATION OF THE TOWN OF INGERSOLL PAVING PROJECT LOCATIONS



## CHARLES STREET - WATER STREET TO HARRIS STREET

- FULL DEPTH ASPHALT REMOVAL
- REPLACEMENT OF CATCHBASINS /MAINTANCE HOLE FRAMES AND GRATES
- CURB REPAIR (AS REQUIRED)

## NORTH TOWN LINE EAST & WEST- HWY 119 TO PEMBERTON STREET

- TOPCOAT - MUTUAL TO PEMBERTON & THAMES TO HWY 119
- MILL AND PAVE - THAMES TO MUTUAL
- REPLACEMENT OF CATCHBASINS /MAINTANCE HOLE FRAMES AND GRATES
- CURB REPAIR (AS REQUIRED)

KEY PLAN  
SCALE: NTS

 PROJECT LOCATION